



Butterfly

Foundation for Eating Disorders

#MAYDAYS2019

#CARERSNEEDCARETOO

A close-up profile of a woman's face, mostly in shadow, with her hair pulled back. The lighting is dramatic, highlighting her features against a dark background.

**RAISING THE ALARM:
CARERS NEED CARE TOO**

MAYDAYS

FOR EATING DISORDERS

DONATE NOW: [THEBUTTERFLYFOUNDATION.ORG.AU/MAYDAYS](https://www.thebutterflyfoundation.org.au/maydays)

#MAYDAYS2019 #CARERSNEEDCARETOO



Butterfly

Foundation for Eating Disorders

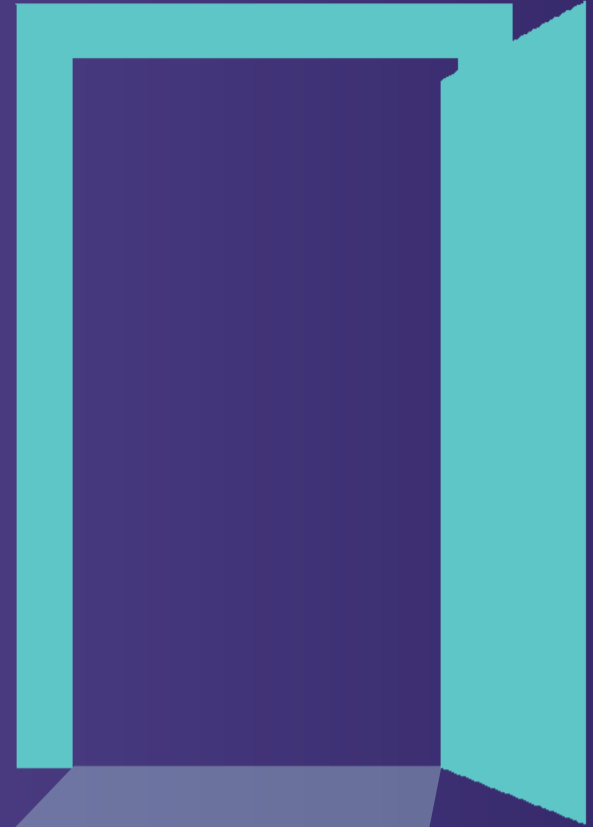
CARERS NEED CARE TOO
HELP RAISE THE ALARM

MAYDAYS

FOR EATING DISORDERS

DONATE NOW: THEBUTTERFLYFOUNDATION.ORG.AU/MAYDAYS

#MAYDAYS2019 #CARERSNEEDCARETOO



**HELP
BUTTERFLY
OPEN DOORS
TO CARER SUPPORT**

MAYDAYS

FOR EATING DISORDERS



Butterfly

Foundation for Eating Disorders

DONATE NOW: [THEBUTTERFLYFOUNDATION.ORG.AU/MAYDAYS](https://www.thebutterflyfoundation.org.au/maydays)